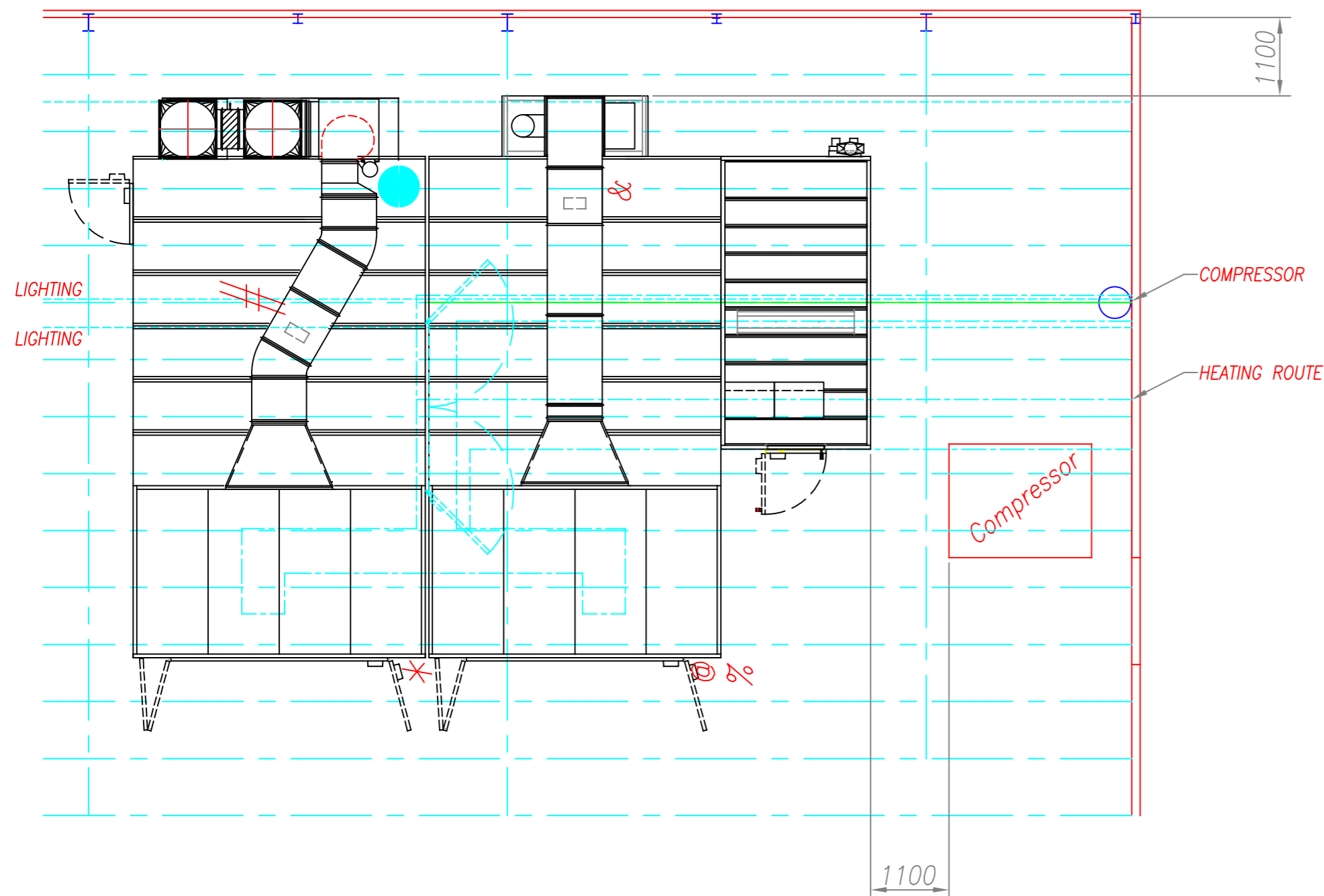
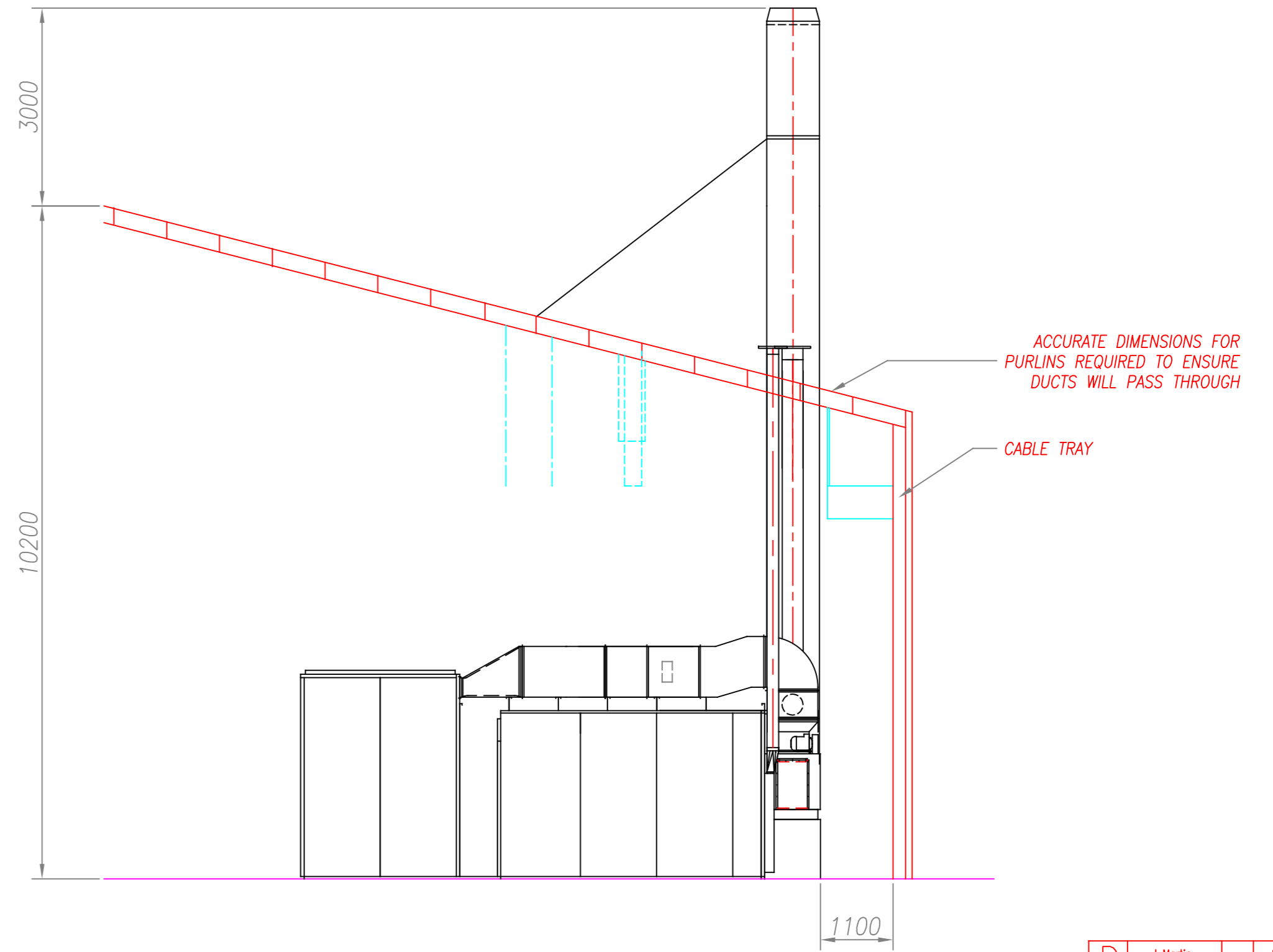
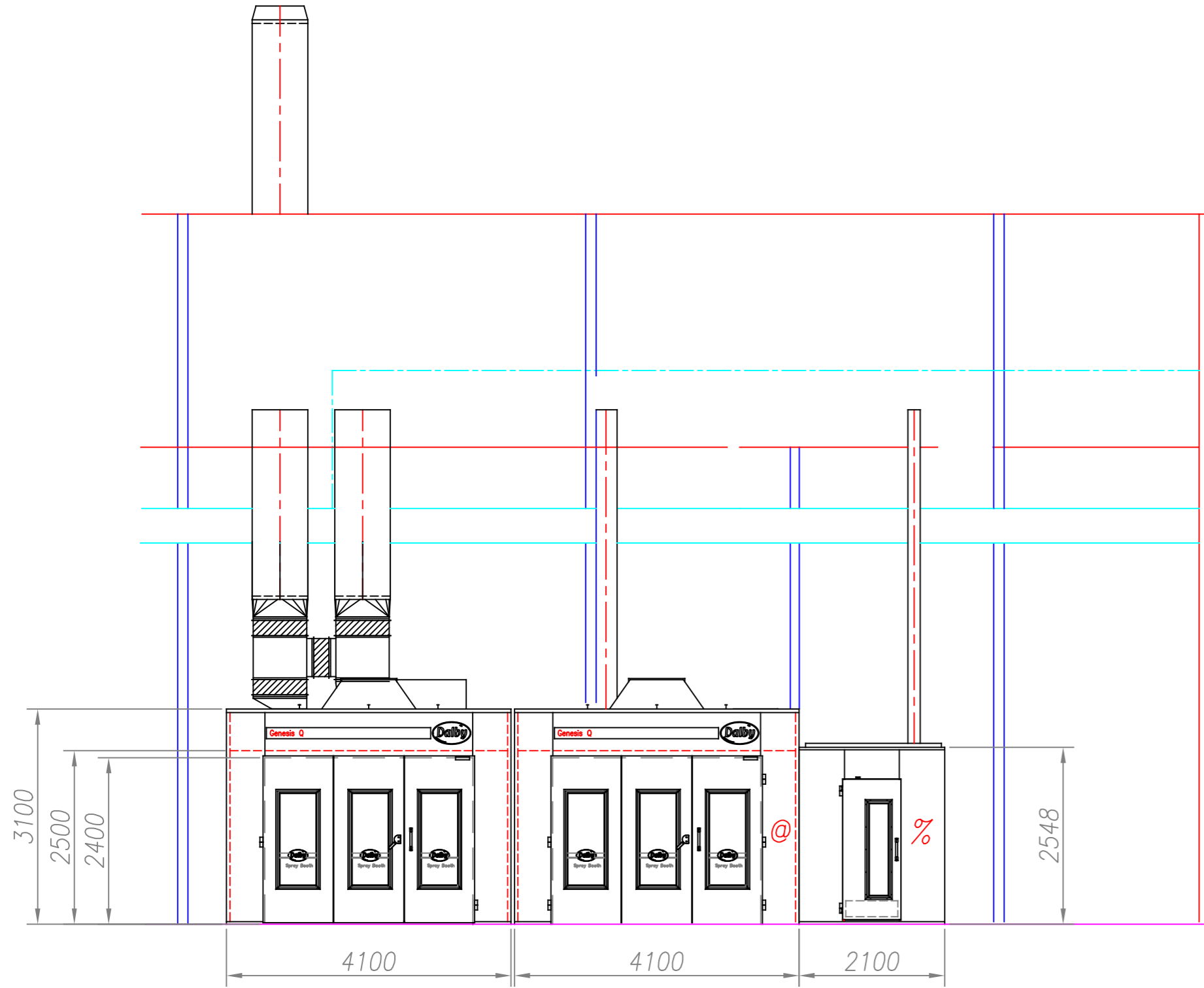


ALL DIM. ARE IN mm

DO NOT SCALE

IF IN DOUBT ASK!



Q BOOTH SYMBOL KEY

- * CONTROL PANEL ELECTRICITY SUPPLY, CONNECTION FROM ISOLATOR TO PANEL BY CLIENT, 400V 3 PHASE WITH NEUTRAL & EARTH 32 AMP
- # GAS CONNECTION POINT
135 kW (460,000 BTU/HR) @ 20 mBar
@ 37.5 mBar IF LPG
- COMPRESSED AIR PIPING THROUGH THIS POINT WITH 1/2" (F) BSP INLET & 1/2"(M) BSP OUTLET ON BOOTH WALL, AIR SHOULD BE FILTERED TO 50 MICRON OR BETTER

LOW BAKE OVEN

- & GAS CONNECTION POINT
460 000 BTU'S /hr
- @ CONTROL PANEL ELECTRICITY SUPPLY, CONNECTION FROM ISOLATOR TO PANEL BY CLIENT, 400V 3 PHASE WITH NEUTRAL AND EARTH 16 AMP

PMR SYMBOL KEY (TWIN FANS)

- % CONTROL PANEL ELECTRICITY SUPPLY CONNECTION FROM ISOLATOR TO PANEL BY CLIENT 230V SINGLE PHASE 6 AMP FUSED SWITCH

GENERAL NOTE – BASE FOR INTERNAL SPRAYBOOTHS
CLIENT TO ENSURE THAT THE FLOOR IN THE AREA UNDERNEATH THE SPRAYBOOTHS AND PLANT AND IN THE APPROACH TO IT IS FLAT AND LEVEL. IF THE FLOOR IS MORE THAN 25mm OUT OF LEVEL, IT MUST BE SCREEDED.

D	L.Martin 19 JUN 2020	✦	BOOTH, OVEN, AND PMR ROTATED AS PER CLIENTS REQUEST.
C	L.Martin 03 JUN 2020	✦	CONTROL PANEL LOCATIONS UPDATED. AND OVEN 3 LEAF DOOR HANDING CHANGED.
B	L.Martin 19 MAY 2020	✦	APEX HEIGHT UPDATED TO 10.2M
A	L.Martin 13 MAY 2020	✦	ORIGINAL ISSUE
ISSUE	DRN./DATE	CHKD	CHANGE DETAILS

CLIENT
VALVE COMPONENTS LTD
5 KELVIN PARK
EAST KILBRIDE
SOUTH LANARKSHIRE
G75 0RH

TITLE

LAYOUT DRAWING FOR
Q BOOTH, OVEN AND PMR

CONTRACT NO: SB19331 ORIGINAL SCALE: 1:75
DRAWING NO: P-VAL01



HARRY DALBY ENGINEERING LTD
GLOUCESTER CRESCENT WIGSTON LEICESTER LE18 4YQ
TEL: 0116 291 6000 FAX: 0116 291 6001

GENERAL TOLERANCES	<300mm	<1.2M	>1.2M
CUTTING	± 0.5	± 0.5	± 0.5
PUNCHING	± 0.2	± 0.5	± 0.5
FORMING/FOLDING	± 0.5	± 1.0	± 2.0
DUCTING	± 1.0	± 3.0	± 5.0
GENERAL INSTALLATION	± 2.0	± 3.0	± 5.0
DUCTING INSTALLATION	± 3.0	± 5.0	± 10.0

THIS DRAWING IS ISSUED SOLELY ON THE UNDERSTANDING THAT IT IS COPYRIGHT AND CONFIDENTIAL. IT MAY NOT BE USED OR REPRODUCED WITHOUT PRIOR WRITTEN CONSENT OF THE COMPANY

FIRST ANGLE PROJECTION A2