



Gee Road Whitwick Business Park
Coalville Leicestershire LE67 4NH England

Telephone +44 (0)1530 511400
Sales Fax +44 (0)1530 511440
Technical Support Fax +44 (0)1530 511442

Email name@matsuura.co.uk
Internet Address www.matsuura.co.uk

COPY

ORDER ACKNOWLEDGEMENT

P/Order No.

15269

Date

14 February 2018

Messrs

GB Engineering Ltd
Westfield, Wybunbury Road
Walgherton
Nantwich
Cheshire CW5 7NG

Dear Sirs

We hereby confirm having sold to your esteemed company the following goods on the terms and conditions hereafter set forth. This Order Acknowledgement provides confirmation of all equipment, goods and services included within the scope of supply relating to your order and represents the entirety of our deliverables to your company. **It is important that you check the enclosed details thoroughly and notify us of any discrepancies within 21 days from the date of this document.** Failure to highlight any discrepancies within 21 days could potentially lead to additional costs being charged and warranty uptime agreements not being activated.

Item No.	Articles & Description	Total Amount
	One New Matsuura Machining Centre Model H.Plus-400 with G.Tech 31i Control as per your Order No. 15269, Machine Serial No. 2000276	263,089.00
	Machine Capacity: X,560mm / Y, 640mm / Z, 640mm Distance from Pallet Centre to Spindle Gauge Line 70mm - 710mm Distance from Pallet Surface to Spindle Centre 80mm - 720mm Maximum Workpiece Size - Dia. 630mm x H.900mm 60m/min X, Y and Z Rapids, 60m/min Maximum Feedrates Spindle Oil Cooler / Chip Flow 15" LCD/Colour Screen (Touch Screen) IZ-1/15F including AI Contour Control / Helical Interpolation Synchronised Tapping Function / Skip Function, G31 9 Sets of "M" Code Part Counters / Macro Program, G65 Tool Offset Memory C, H and D Split 1,000 Registered Programs / 0.5MB Memory Capacity	
Options	20,000rpm, BT40, Big Plus Spindle, Direct Drive	27,946.00
	164 Tools on a 294 Magazine Base (Rack Type) with 400 Tool Offsets	96,560.00
	PC12 Tower Pallet System including Load/Unload Station & Pallets (12 off)	159,040.00
	"B" Axis with Inductosyn Scale Feedback, Direct Drive, 100rpm	28,400.00
	Additional Work Offsets (48 Sets) G54.1	682.00
	Large Memory Function (1GB HD)	1,608.00
	Renishaw NC4 Laser Tool Detection Probe	6,011.00
	Renishaw RMP600 Inspection Probe	4,995.00
	20 Bar High Pressure Coolant Through the Spindle (Duplex Filter)	10,133.00
	Drum Filtration Swarf Management System including Lift-Up Conveyor and 2 off Chip Bins	18,374.00
	Matsuura Cell Monitor	5,000.00
	MST Spindle Tooling Package to a value of	10,000.00
	Levelling pads and bolts, Set of mechanical tools, operator & programming manuals	
Total Price		631,838.00
Discount		(301,838.00)
Agreed Selling Price		£330,000.00
VAT		66,000.00
Gross Total		£396,000.00

Delivery

Monday 30 April 2018 - To be confirmed

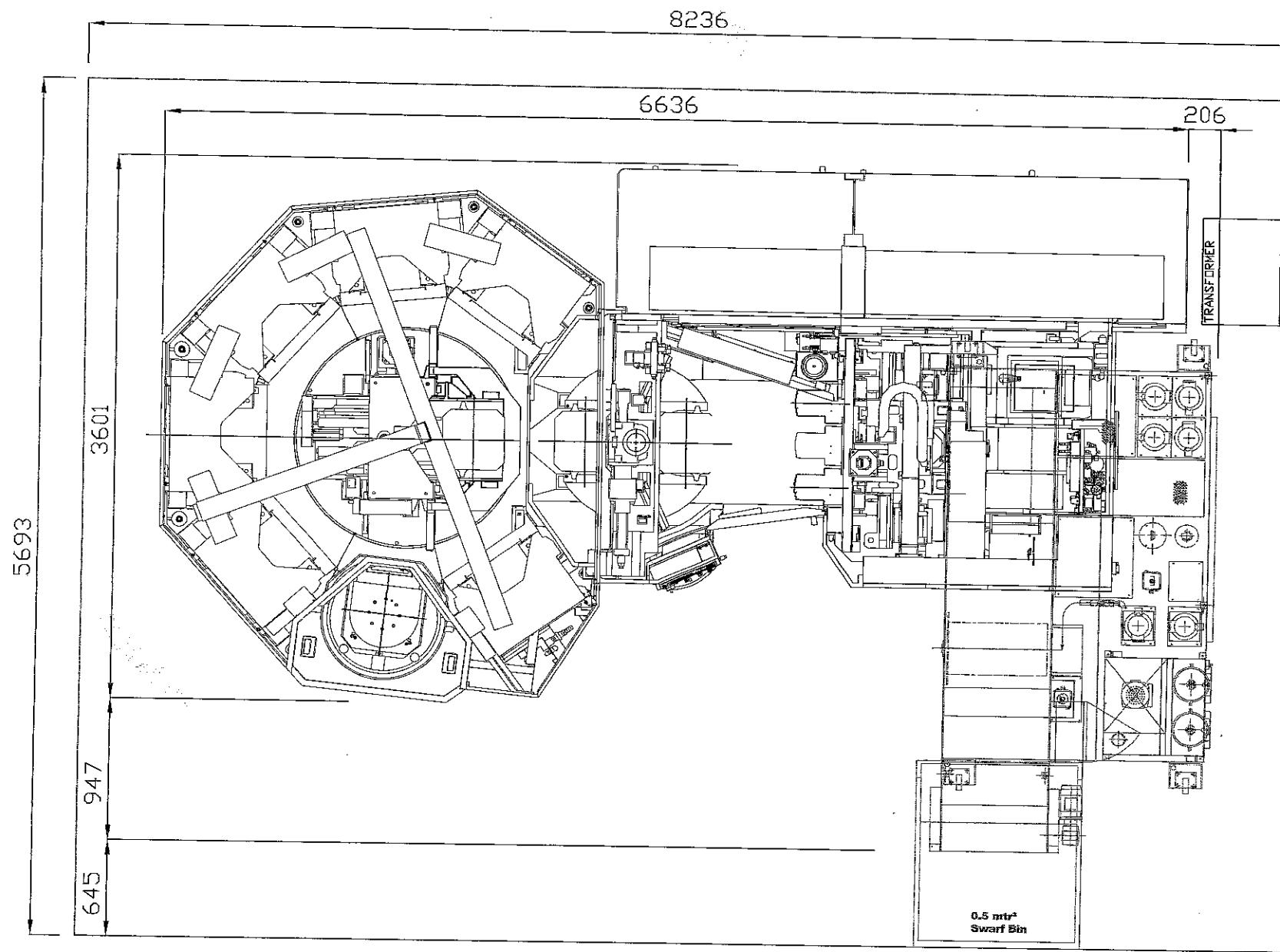
Destination

Westfield, Wybunbury Road, Walgherton, Nantwich, Cheshire CW5 7NG

Site Preparation

Prior to installation site has to be prepared (access to the area and machine site needs to be clear). Any requirements for additional moving of machines at your request will be chargeable accordingly.

continued...



PROVISIONAL LAYOUT.

 MATSUURA MACHINERY LTD	Model: H.Plus400	Pallet Changer: PC12	Toolchangers: 294/330	Coolant system: Operator Exit Swarf Management (FSE)
--	----------------------------	--------------------------------	---------------------------------	--

H.Plus-400/PC12/294,330TOOLS FOUNDATION (1)

基礎図 (1)

注意

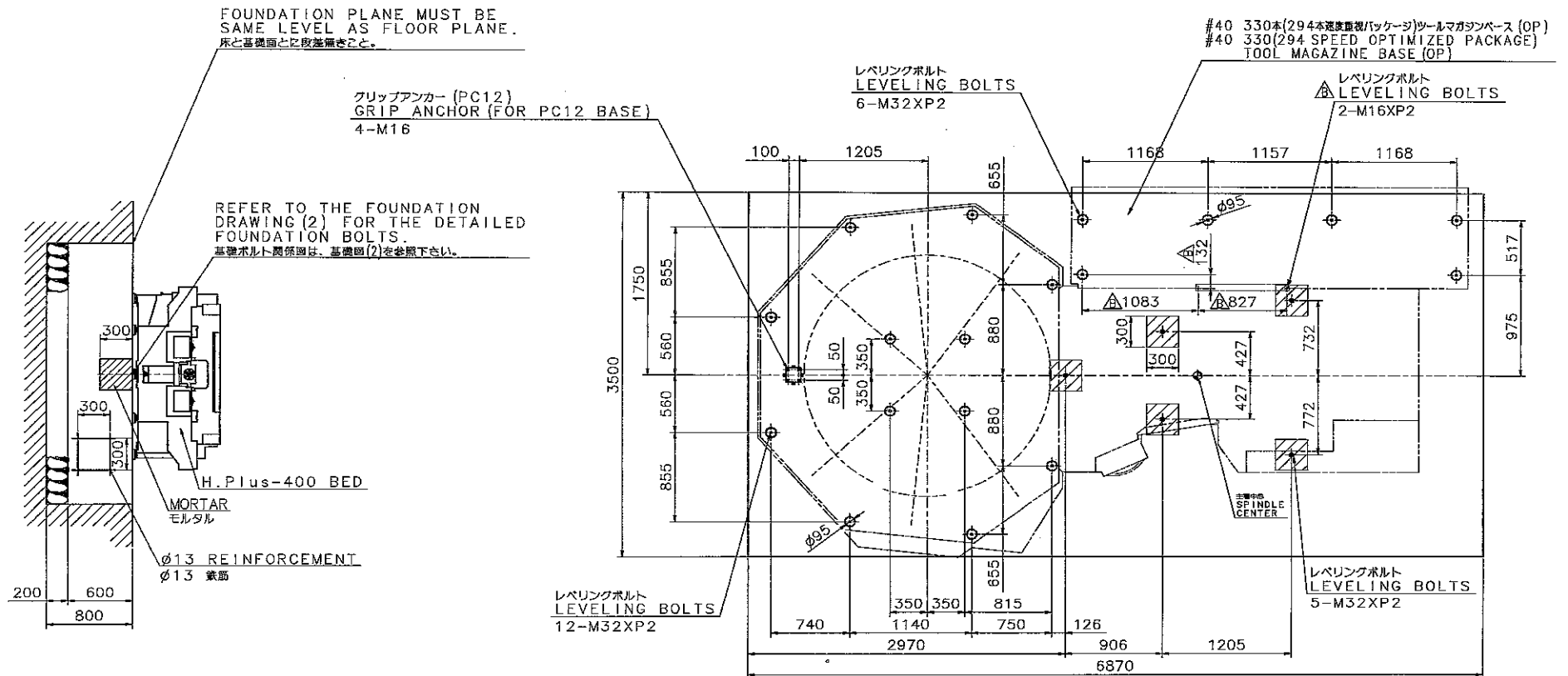
- 1) 本機を設置する場合は、必ずアンカーボルトにて固定する事を考慮下さい。
- 2) 各アンカーボルトの位置の許容差は、それぞれの絶対位置に対して5mm以内の事。
- 3) 本機を据え付ける床は本機重量に十分に耐えるものを御用意下さい。
- 4) 基礎コンクリートの厚みと広さは地面力により異なります。
必要ならば、鉄筋を入れ補強して下さい。
- 5) 床面のレベルは全域に渡り5mm以内の平面に仕上げして下さい。

NOTE:

- 1) When you install the machine, you have to fix it with the anchor bolts as shown below.
- 2) The deviation from the correct anchor bolt positioning has to be less than 5mm.
- 3) The floor has to be strong enough to bear the whole machine weight and APC system.
- 4) The thickness and area of concrete required varies, since it is dependent on the rigidity of ground structure. If necessary, reinforce the concrete with reinforcing bars.
- 5) The variation in height of the concrete surface must be less than 5mm.

WEIGHT 重量	
TOTAL MACHINE WEIGHT (WG) 機械総重量	18,200kg
MAX WORK WEIGHT (WW) 加工物許容重量	12X400kg
MAX TOOL WEIGHT (WW) 工具物許容重量	330X10kg
WEIGHT OF FOUNDATION (WF) 基礎重量	31,740kg

NECESSARY STRENGTH OF GROUND 所要地耐力	
FACTOR OF SAFETY (FS) 安全率	2
$(WG+WW+WF) \times (FS)$ BASE AREA	4.83ton/m ²



△ x	--			△ x	--			START LOT NO.	DATA NO.	DATA NAME
△ x	--			△ x	--			1410FR001	MD1-4320	H.Plus-400 FOUNDATION(1)
△ x	--			△ x	--			SIZE	USER	
△ x	--			△ x	--			DATE		
△ x	--			△ x 4	101315			APPROVED	CHECKED	DRANK
△ x	--			△ x	030415			DATE	SCALE	DRG. NO.
△ x	--			△ x				DATE	SCALE	DRG. NO.
仕様変更履歴	月日年	内容	担当	仕様変更履歴	月日年	内容	担当	松浦機械製作所	1/20	M1-24780